

INSTALLATION GUIDE

Version 1.0

April 10, 2007

Author: Alex Khizhnyak

Email: alexey.kh@apatar.com

Table of Contents

- 1. Pre-Installation Requirements 3**
 - 1.1. *Hardware Requirements* 3
 - 1.2. *Operating System Requirements* 3
- 2. Installation Process 3**
 - 2.1. *Step #1: Apatar Download* 3
 - 2.2. *Step #2: Running Setup* 3
 - 2.3. *Step #3: Selecting Components* 4
 - 2.4. *Step #4: Choosing Destination Folder* 6
 - 2.5. *Step #5: Choosing Start Menu Folder* 7
 - 2.6. *Step #6: Registration* 8
 - 2.7. *Step #7: Completing the Installation* 8
- 3. Installation Notes 8**

1. Pre-Installation Requirements

Before you install and configure Apatar, you must provide the following pre-installation requirements.

1.1. Hardware Requirements

- 100 MB of disk space
- 512 MB of RAM
- 1GHz processor

1.2. Operating System Requirements

- MS Windows (2000, XP, 2003, Vista)

2. Installation Process

Apatar installation is intuitive and easy.

2.1. Step #1: Apatar Download

Download Apatar Data Integration at http://sourceforge.net/project/showfiles.php?group_id=189179&package_id=21620&release_id=486392.

Figure 2.1.1 Apatar Download Form at SourceForge.net

Package	Release (date)	Filename	Size (bytes)	Downloads	Architecture	Type
Apatar Data Integration/ETL						
Latest	Latest Release	(2007-02-14 01:08)				
		apatar.exe	30101631	48	None	None
Totals:	1	1	30101631	48		

2.2. Step #2: Running Setup

Run "Apatar.exe" from your computer.

2.3. Step #3: Selecting Components

Select Apatar components to be installed:

Figure 2.3.1 Choose Components: General

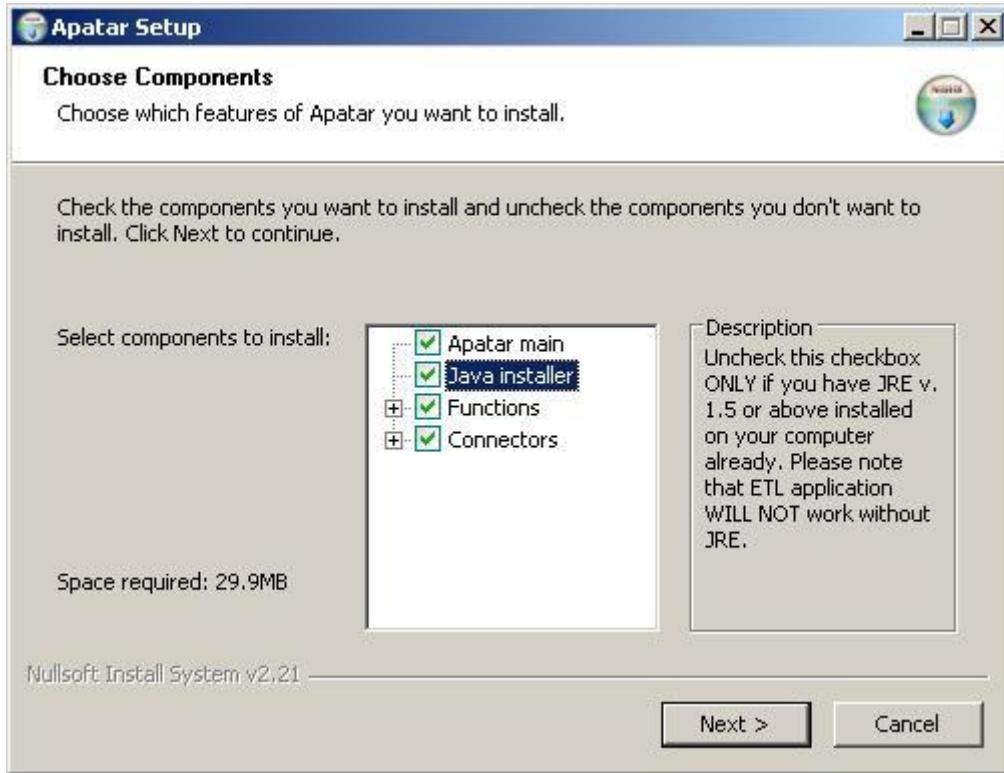


Figure 2.3.2 Choose Components: Functions

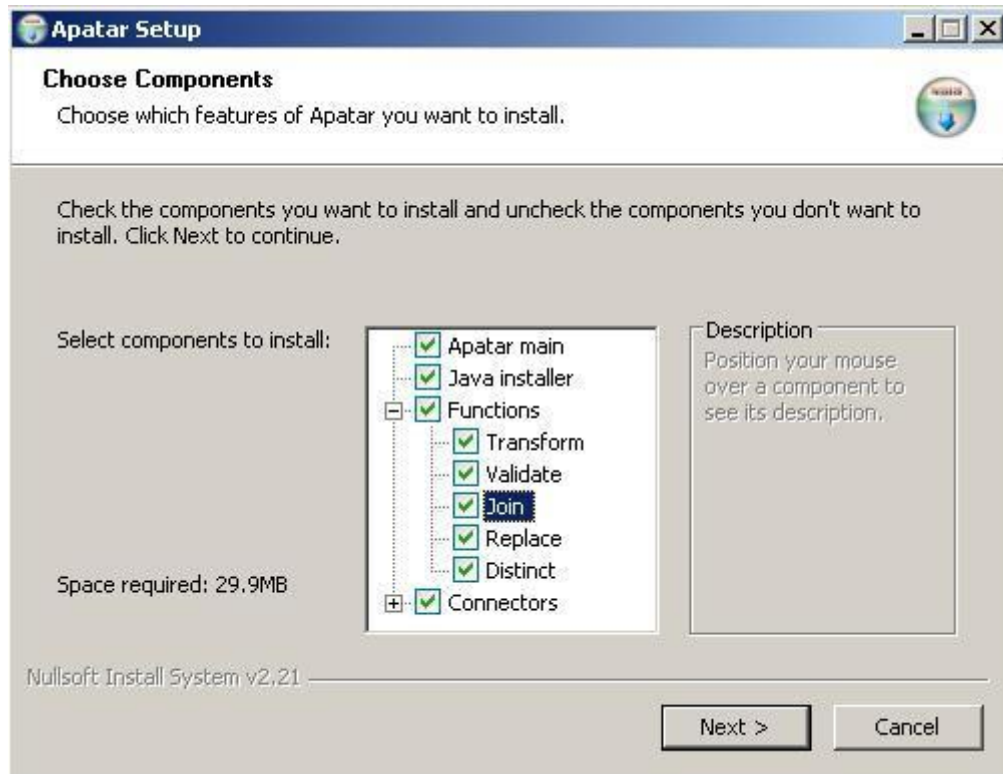
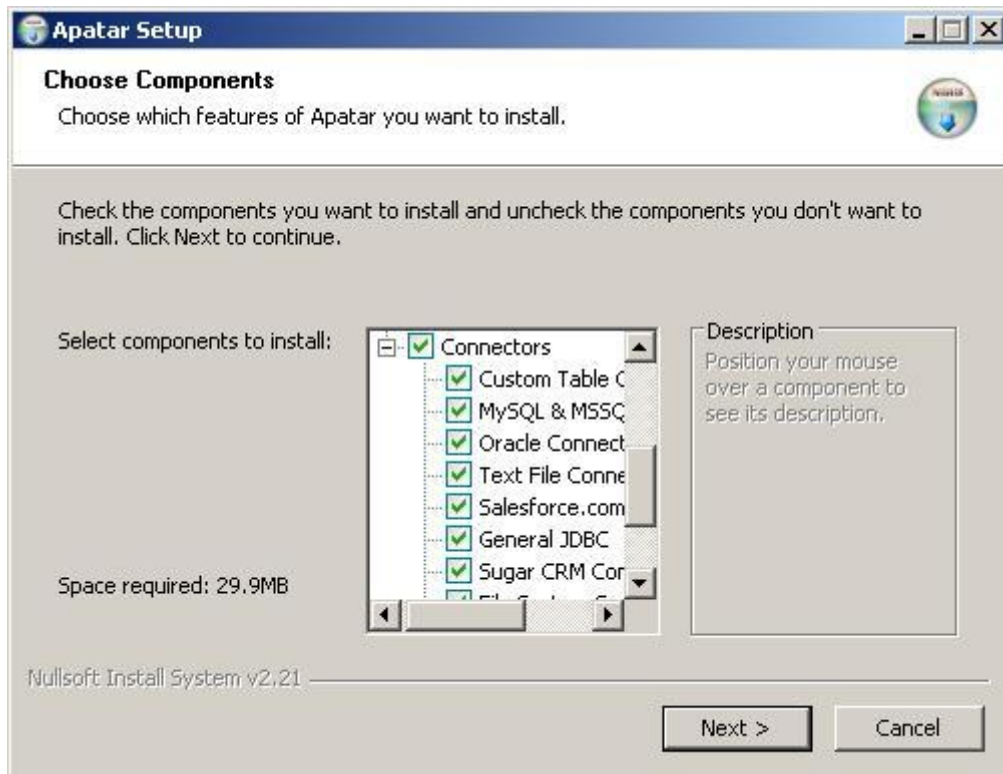


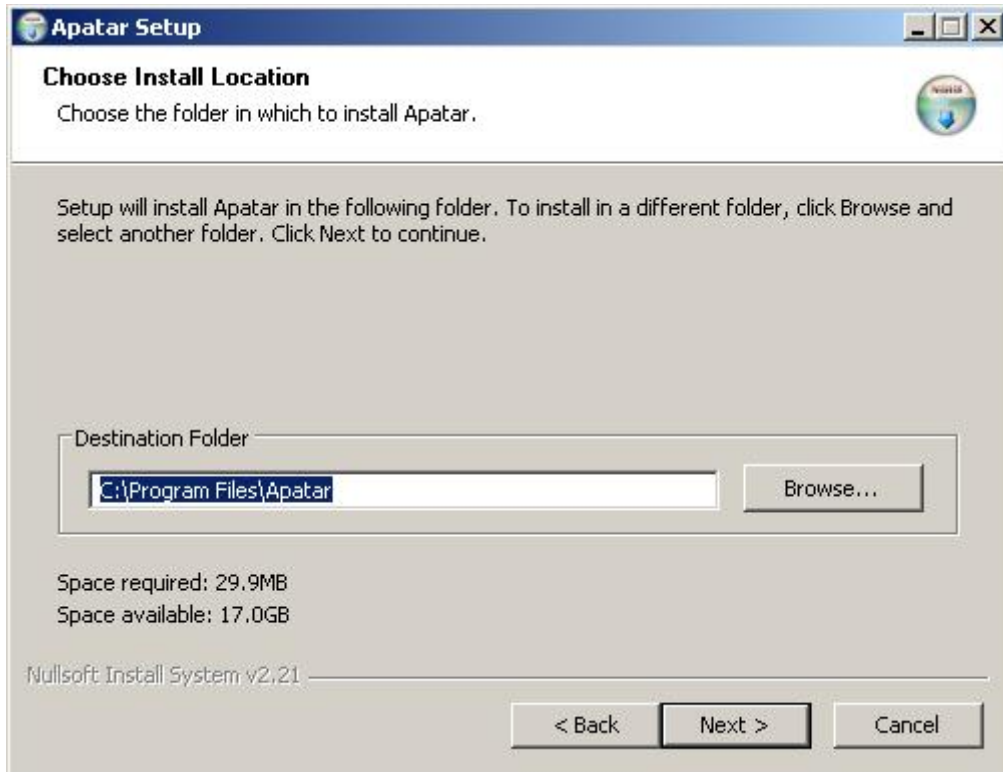
Figure 2.3.3 Choose Components: Connectors



2.4. Step #4: Choosing Destination Folder

Choose destination folder

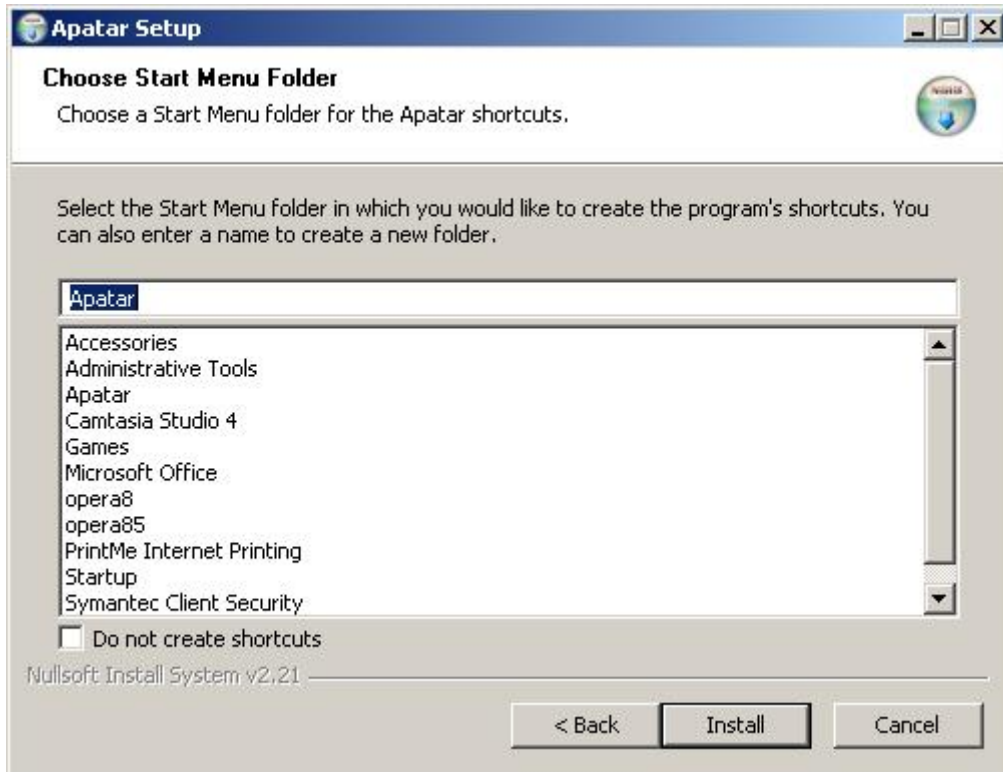
Figure 2.4.1 Destination Folder



2.5. Step #5: Choosing Start Menu Folder

Choose Start menu folder

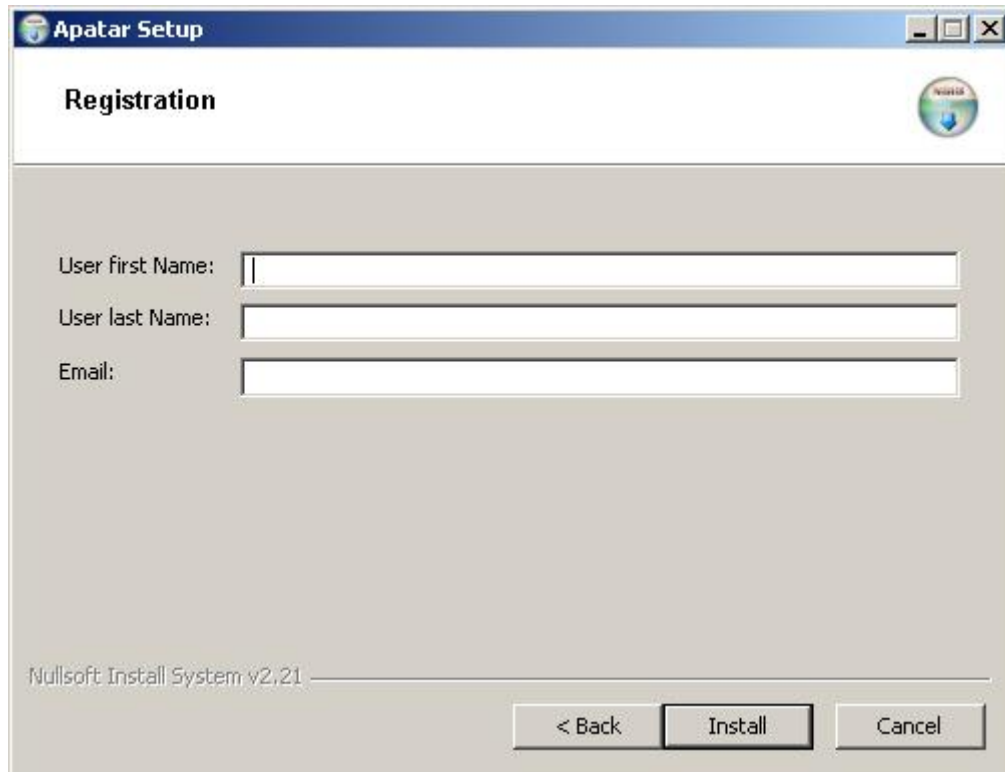
Figure 2.5.1 Start Menu Folder



2.6. Step #6: Registration

Fill in your name and e-mail address

Figure 2.5.1 Registration



The screenshot shows a Windows-style dialog box titled "Apatar Setup" with a "Registration" sub-header. It contains three text input fields: "User first Name:", "User last Name:", and "Email:". At the bottom, there are three buttons: "< Back", "Install", and "Cancel". The text "Nullsoft Install System v2.21" is visible in the bottom left corner of the dialog.

2.7. Step #7: Completing the Installation

Wait while Apatar files are being extracted.

Once Apatar is installed, you can run the application from the Apatar folder in your 'Start' menu.

3. Installation Notes

If Java Runtime Environment (JRE version 1.5 or above) is not installed on your computer, then an automated wizard will be launched to install the updates. Please, note that Apatar will not work without JRE.